

**RESOLUTION NO. 2019-07
A RESOLUTION OF THE BOARD OF DIRECTORS OF
THE BIOLA COMMUNITY SERVICES DISTRICT CONFIRMING
DIAGRAM AND ASSESSMENT FOR THE ANNUAL LEVY FOR
2019-2020 FOR LANDSCAPING AND LIGHTING MAINTENANCE DISTRICT NO. 1**

WHEREAS, the Board of Directors of the Biola Community Services District (the "Board") did previously adopt its Resolution for the formation of the Landscaping and Lighting Maintenance District No. 1 (herein "LLMD No. 1") of the Biola Community Service District (the "BCSD"); and

WHEREAS, BCSD did thereafter declare its intention to form and did form the said LLMD NO. 1 and did levy and collect the first assessment and subsequent assessments for the maintenance and operation of the landscaping facilities in LLMD No. 1; and

WHEREAS, the Engineer has prepared and filed a report with the General Manager of BCSD entitled "Engineer's Report of the Biola Community Services District Landscaping and Lighting District No. 1" (the "Engineer's Report") in accordance with Streets and Highways Code section 22565 *et seq.* as directed by the Board, and the Board approved the Engineering's Report by adopting Resolution No. 2019-04; and

WHEREAS, the Board adopted Resolution No. 2019-06 on May 16, 2019, a Resolution of Intention in accordance with Streets and Highways Code section 22624, and set a public hearing on the levy of the proposed assessment for June 20, 2019; and

WHEREAS, the Board cancelled and re-noticed the public hearing for July 18, 2019, the next regularly scheduled meeting of the Board; and

WHEREAS, the proposed annual assessments for LLMD No. 1 are contained in the Engineer's Report do not constitute increased assessments as described in Government Code section 54954.6; and

WHEREAS, the Resolution of Intention was published in accordance with applicable law, and the July 18, 2019 public hearing was duly noticed; and

WHEREAS, the public hearing was conducted on July 18, 2019, and all oral statements and written protests were received and considered by the Board, and a majority protest was not filed.

NOW, THEREFORE, IT IS RESOLVED AND ORDERED, as follows:

1. The Board hereby determines that the territory within the LLMD No. 1, the boundaries of which are set forth in the Engineer's Report dated May 2019, and on file with the General Manager of BCSD, will be the territory benefited by the maintenance and servicing of the improvements described in said Engineer's Report.

2. The hearing on said annual levy of assessment was held in accordance with applicable law, and a majority protest was not filed.

3. The Engineer's Report, the diagram for the assessment district, and the assessment of the estimated costs of the improvements contained therein and each and every part of said report, is adopted, confirmed, and approved; and the assessment upon the land in LLMD No. 1 being found to be in proportion to the benefits to be received from the improvements, are finally approved and confirmed as the assessment to pay the costs of said improvements and the expenses incidental thereto.

4. The Board hereby orders the levy of the assessments described in said Resolution of Intention and the Engineer's Report.

5. The assessment diagram showing the assessment district referred to in said Resolution of Intention and also the subdivisions of land within the District, as contained in said Engineer's Report, is the diagram of the properties that are to be assessed to pay the District costs.

6. The General Manager shall file the diagram and assessment, as confirmed, or a certified copy thereof, with the Recorder of the County of Fresno no later than July 22, 2019 and all assessment information required by the County Auditor to the Auditor's office no later than July 31, 2019.

The foregoing resolution was introduced and adopted at a regular meeting of the Board of Directors of the Biola Community Services District held on the 18th day of July, 2019, by the following vote, to wit:

AYES:

NOES:

ABSENT:

ABSTAIN:

The foregoing resolution is hereby approved.

Rudy Hernandez, Board President

ATTEST:

Eduardo Antunez, Board Secretary



MEMORANDUM

TO: Biola Community Services District Board of Directors
FROM: Gary D. Horn
DATE: July 18, 2019
RE: Public Hearing and Approval of Resolution Confirming Diagram and Assessments for the Annual Levy, 2019-2020, for Landscaping and Lighting District No. 1

BACKGROUND

The Landscape and Lighting Act of 1972 requires that certain actions be completed by the Board prior to levying assessments upon properties within the Biola CSD Landscaping and Lighting District No. 1 (LLD). The Board has previously adopted resolutions for initiation of proceedings and intention to levy and collect assessments. The final action required of the Board is to conduct a public hearing to consider protests to the proposed assessments and to confirm the diagram and assessments. The Engineer's Report, dated May 2019, for the LLD is on file with the District Manager and contains a detailed description of the improvements being maintained, the boundaries of the LLD, and the proposed assessment for each property within the LLD. There have been no annexations to the LLD this past year.

SITUATION

The assessments are unchanged from the previous years. The LLD maintains street lights within the District and some public landscaping. There is currently one sub-area of 33 lots in Tract No. 3681, within the Landscape and Lighting District No. 1, which pays for additional landscaping and lighting as well. The total cost for the LLD are estimated to be \$9,249 for street lighting and landscape maintenance. The total assessments are \$7,295.10.

Increases in the assessments would require Board action following a Proposition 218 notice, public hearing and ballot of the property owners. The additional cost above the assessments will come from the District's general fund.

RECOMMENDATION

District Board conduct a Public Hearing to receive public testimony and following that, by motion adopt the attached Resolution Confirming the Diagram and Assessments for the annual levy of the Landscape and Lighting District No. 1.

19-106

BIOLA COMMUNITY SERVICES DISTRICT

LANDSCAPING AND LIGHTING DISTRICT NO. 1

ENGINEER'S REPORT

MAY 2019

Prepared By:

Yamabe & Horn Engineering, Inc.
2985 N. Burl Avenue, Suite 101
Fresno, CA 93727

ENGINEER'S REPORT

BIOLA LANDSCAPING AND LIGHTING DISTRICT NO. 1

BIOLA COMMUNITY SERVICES DISTRICT

STATE OF CALIFORNIA

WHEREAS, the Board of Directors of the Biola Community Services District, California, pursuant to the provisions of the Landscaping and Lighting Act of 1972, California Streets and Highways Code Section 22500 et seq., adopted a Resolution Initiating Proceedings for the purpose of collecting assessments to defray the cost of maintaining the street lighting and public landscaping in designated areas in the Biola Community Services District, more particularly therein described;

WHEREAS, said Resolution Initiating Proceedings directed the Engineer of Work to prepare and file a report in accordance with Article 4 Chapter 1 of the Streets and Highways Code of the State of California, pursuant to Section 22585, including the estimate of costs of improvements and of the incidental expenses in connection therewith, a diagram of the assessment district, and a proposed assessment of the costs of the improvements to which Resolution Initiating Proceedings reference is hereby made for further particulars. The improvements shall consist of the maintenance of all of the street lighting facilities, and public landscaping located in designated areas of the Biola Community Services District.

NOW, THEREFORE, I, Gary D. Horn, Engineer of Work of said Biola Landscaping and Lighting District No. 1 by virtue of the power vested in me under said Act and the order of the Board of Directors of the Biola Community Services District, hereby make the following annual levy of assessment in accordance with Article 4, Chapter 3 of Streets & Highway Code of the State of California to cover the portion of the estimated cost of said work and improvements pursuant to the plans and specifications presently on file with the Clerk of the Biola Community Services District and in the District Office of the Biola Community Services

District and incorporated herein by reference and the costs and expenses incidental thereto to be paid by the assessment district set forth in this Report.

As required by said Act, Assessment Diagram of Biola Landscaping and Lighting District No. 1 shows the assessment district and the boundaries of land within said district as they existed at the time of the passage of the Resolution Initiating Proceedings, each subdivision of land having been given a separate number by reference to County of Fresno Tax Assessor's Parcel Number.

I do hereby assess and apportion said total amount of the cost and expenses of the proposed improvement upon the several subdivisions of land liable therefore and benefited thereby all as is more particularly set forth in the assessment roll attached hereto and incorporated herein; and that the numbers of said assessment roll correspond with the numbers upon the referenced County of Fresno Assessor's Parcel Maps. Said assessment is made upon the several subdivisions of land in the district in proportion to the estimated benefits to be received by each subdivision respectively from the improvement. For a more particular description of said property, reference is made to the assessment roll and the deeds and maps on file and of record in the office of the County Recorder of Fresno County and to the notes of said Boundary Description as set forth in the map of Proposed Boundaries of Biola Community Services District Landscaping and Lighting District No. 1, contained in this assessment report.

Dated: _____, 2019.

Gary D. Horn, Engineer of Work of the Biola Community Services District

I, Eduardo Antunez, Secretary of the Board of Directors for the Biola Community Services District, do hereby certify that the foregoing assessment, together with the assessment diagram of the Biola Community Services District Landscaping and Lighting District No. 1, attached thereto, was filed with me on the _____ day of _____, 2019.

SECRETARY OF BOARD OF DORECTORS FOR BIOLA COMMUNITY SERVICES DISTRICT

By _____
Eduardo Antunez

I, Oscar J. Garcia, C.P.A., Auditor-Controller/Treasurer-Tax Collector of the County of Fresno, do hereby certify that the foregoing assessment, together with the assessment diagram, was filed in my office on the day of _____, 2019.

By _____
Oscar J. Garcia, CPA
Auditor-Controller/Treasurer-Tax Collector

BIOLA COMMUNITY SERVICES DISTRICT

BIOLA LANDSCAPING AND LIGHTING DISTRICT NO. 1

I. ASSESSMENT DISTRICT BOUNDARIES

The boundaries of the Assessment District are shown in Exhibit A attached, and generally described as:

All of the parcel encompassed by the Biola Community Services District boundary, excepting therefrom Lots 1 through 59 of Tract No. 5322, according to the map thereof recorded in Vol. 76 of Plats at Pages 6 through 8.

II. DESCRIPTION OF WORK

AREA 1

Maintenance and operation of all street lights in the community including payment to Pacific Gas & Electric Co. for maintenance and electricity. Maintenance of the drainage basin located on a portion of and south of the former Southern Pacific Railroad right of way lying west of the Fourth Street alignment.

AREA 2

Area 2 covers Tract No. 3681 and is a sub-area within Area 1. In addition to the Area 1 assessments for street lighting, Area 2 is assessed additional costs for lighting.

III. ASSESSMENT PROCEDURE

The assessment district boundaries coincide with the boundaries of development projects within the limits of the Biola Community Services District. The projects are designated as Area 1 and Area 2. The total costs for the areas are as follows:

Area 1	\$8,752.00
Area 2	<u>\$497.00</u>
Total	\$9,249.00

The total number of parcels assessed is 285. The assessments are limited to those initial assessments when the district was formed. Therefore the total costs are greater than the total assessments. Each parcel is assessed the same amount within each area.

IV. COST SUMMARY

AREA 1 Street Lighting

COST DESCRIPTION	AMOUNT
Maintenance Cost	
Street Light Maintenance & Operation	\$5,447.00
Landscape maintenance	\$2,400.00
Incidental Costs	
County Processing & Filing Fees	\$60.00
Engineering Fees	\$530.00
Publishing Costs	\$315.00
TOTAL COST	\$8,752.00

ASSESSMENTS	
Number of Parcels	285
Assessment Per Parcel	\$23.86
TOTAL ASSESSMENTS	\$6,800.10

AREA 2 Landscape Maintenance

COST DESCRIPTION	AMOUNT
Maintenance Cost	
Lighting & Landscape Maint. & Operation	\$384.00
Incidental Costs	
County Processing & Filing Fees	\$8.00
Engineering Fees	\$70.00
Publishing Costs	\$35.00
TOTAL COST	\$497.00

ASSESSMENTS	
Number of Parcels	33
Assessment Per Parcel	\$15.00
TOTAL ASSESSMENTS	\$495.00

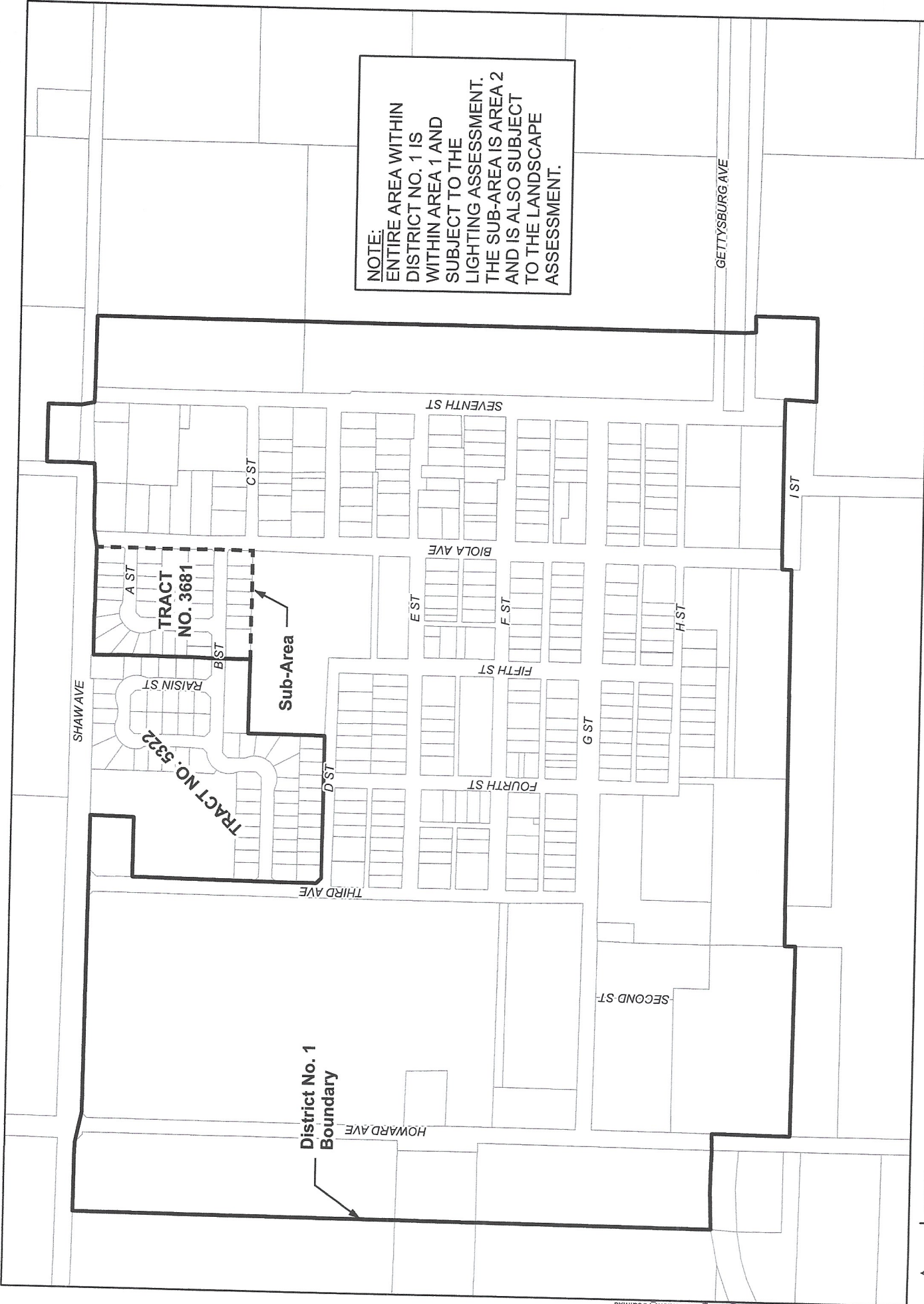
V. ASSESSMENT ROLL

The total of all assessments to be levied is \$7,295.10. The assessments for individual parcels are shown in Attached Exhibit B.

EXHIBIT A

ASSESSMENT DIAGRAMS

NOTE:
ENTIRE AREA WITHIN
DISTRICT NO. 1 IS
WITHIN AREA 1 AND
SUBJECT TO THE
LIGHTING ASSESSMENT.
THE SUB-AREA IS AREA 2
AND IS ALSO SUBJECT
TO THE LANDSCAPE
ASSESSMENT.



District No. 1 Boundary
Sub-Area

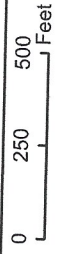
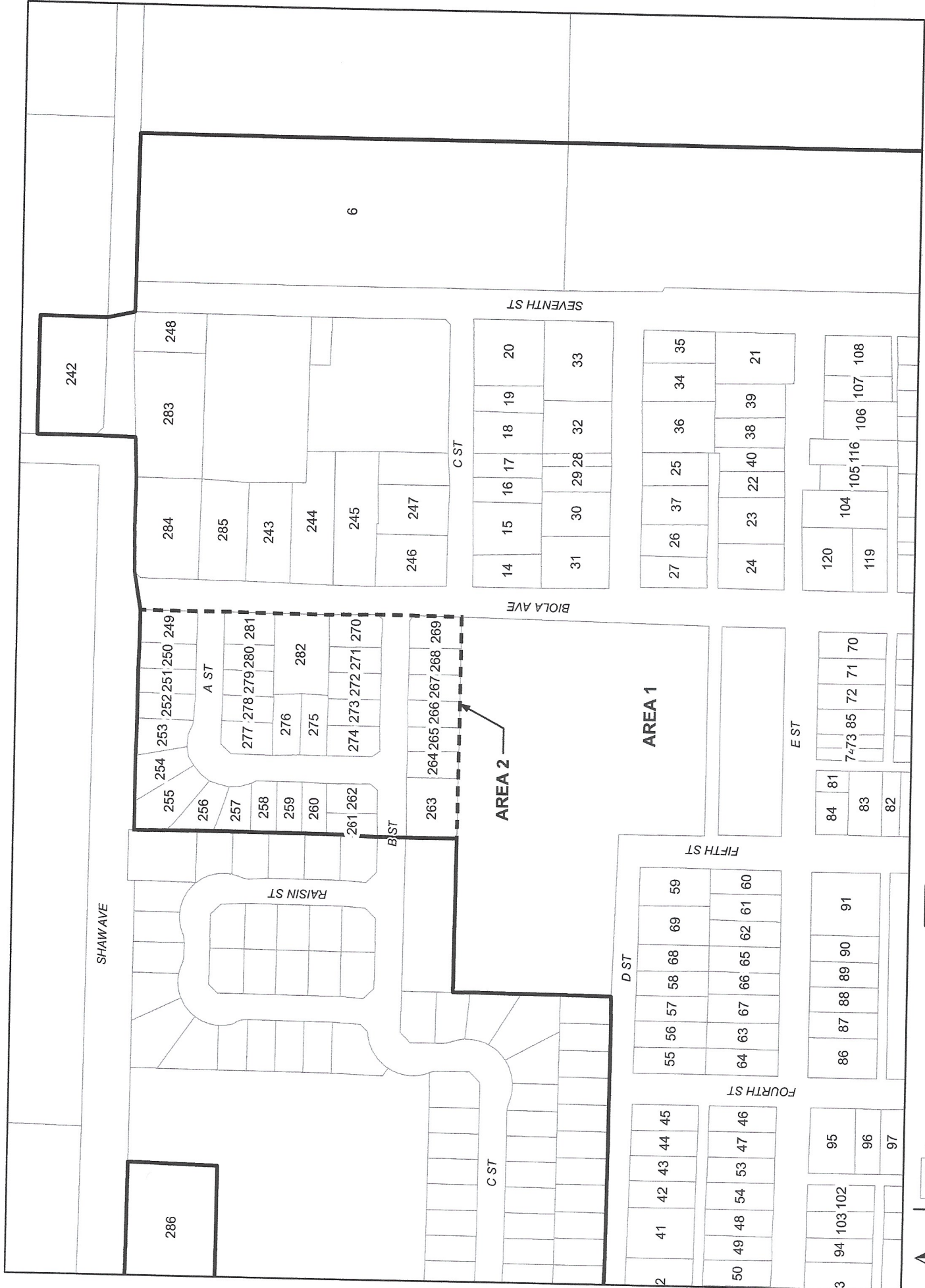


Exhibit A

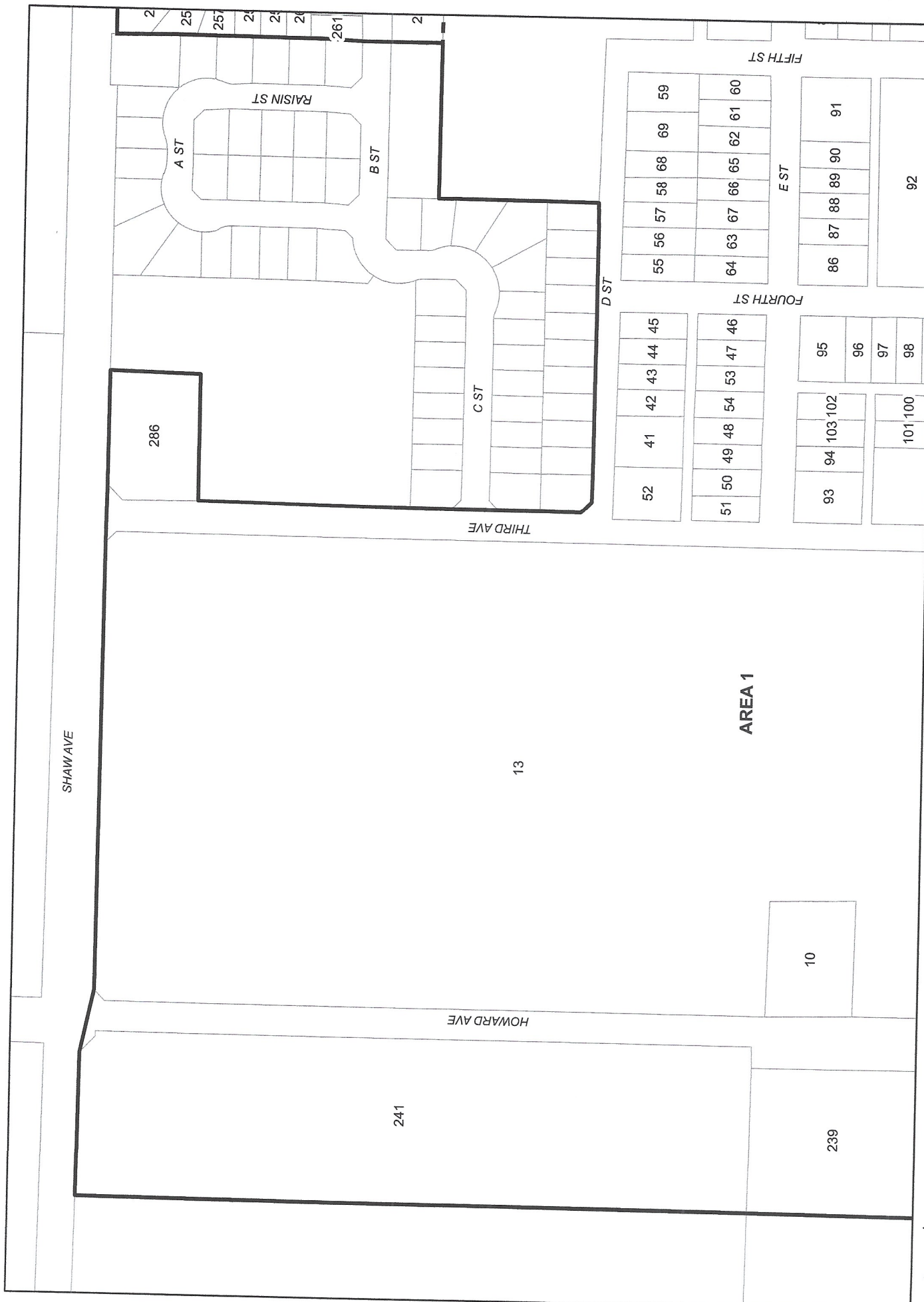


Document Path: F:\2017\17-147\GIS\17-147 LLMD Quads.mxd

XX Parcels with Assessment Number District No. 1 Boundary Sub-Area




Exhibit A





Document Path: F:\2017\17-147GIS\17-147 LLMD Quads.mxd



XX Parcels with Assessment Number  District No. 1 Boundary  Sub-Area  Exhibit A

LLMD No. 1
 Biola Community Services District
 Northwest Quadrant

Yamabe & Hara
 Engineering, Inc.
 10000 E. Harvard Ave.
 Suite 100
 Denver, CO 80231
 Phone: 303.751.1111
 Fax: 303.751.1112
 www.yamabe-hara.com



XX Parcels with Assessment Number



Yamabe & Horn
Engineering, Inc.
Professional Engineers



XX

Parcels with Assessment Number



District No. 1 Boundary



Sub-Area



Yernabee & Herr
Engineering, Inc.

Exhibit A

LLMD No. 1

Biola Community Services District

Southwest Quadrant

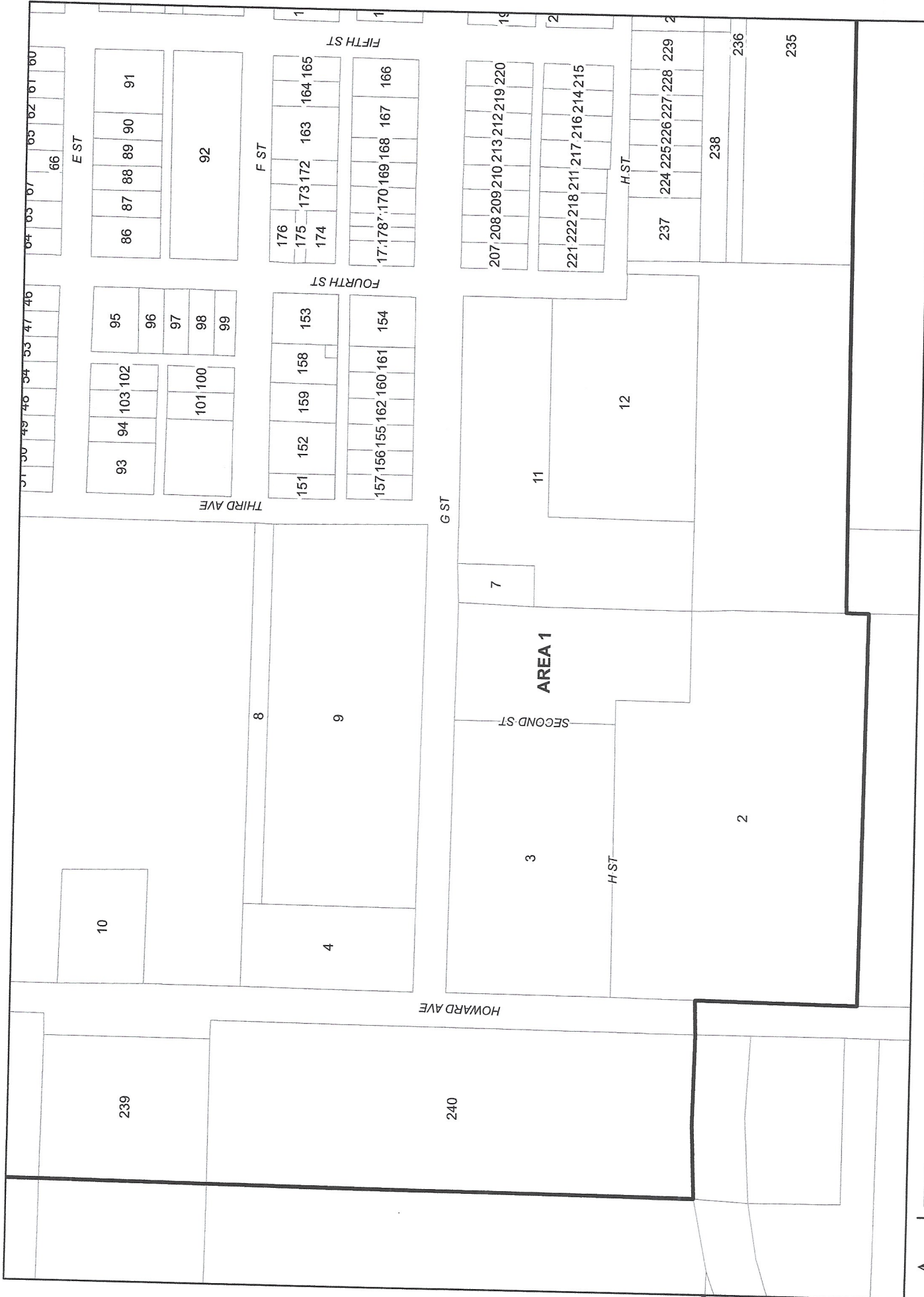


EXHIBIT B

ASSESSMENT NUMBER	APN	ASSESSMENT			ASSESSMENT NUMBER	APN	ASSESSMENT		
		LIGHTING	LANDSCAPE	TOTAL			LIGHTING	LANDSCAPE	TOTAL
1	01608027	\$23.86		\$23.86	63	01626213	\$23.86		\$23.86
2	01608055S	\$23.86		\$23.86	64	01626214	\$23.86		\$23.86
3	01619028S	\$23.86		\$23.86	65	01626219S	\$23.86		\$23.86
4	01619030S	\$23.86		\$23.86	66	01626221S	\$23.86		\$23.86
5	01619034	\$23.86		\$23.86	67	01626223S	\$23.86		\$23.86
6	01619040	\$23.86		\$23.86	68	01626226	\$23.86		\$23.86
7	01619054	\$23.86		\$23.86	69	01626228	\$23.86		\$23.86
8	01619056	\$23.86		\$23.86	70	01626302	\$23.86		\$23.86
9	01619057S	\$23.86		\$23.86	71	01626303	\$23.86		\$23.86
10	01619060	\$23.86		\$23.86	72	01626304	\$23.86		\$23.86
11	01619062	\$23.86		\$23.86	73	01626307	\$23.86		\$23.86
12	01619063	\$23.86		\$23.86	74	01626308	\$23.86		\$23.86
13	01619073	\$23.86		\$23.86	75	01626309	\$23.86		\$23.86
14	01625001	\$23.86		\$23.86	76	01626310	\$23.86		\$23.86
15	01625002	\$23.86		\$23.86	77	01626311	\$23.86		\$23.86
16	01625003	\$23.86		\$23.86	78	01626312	\$23.86		\$23.86
17	01625004	\$23.86		\$23.86	79	01626313	\$23.86		\$23.86
18	01625005	\$23.86		\$23.86	80	01626314	\$23.86		\$23.86
19	01625006	\$23.86		\$23.86	81	01626319	\$23.86		\$23.86
20	01625007	\$23.86		\$23.86	82	01626321	\$23.86		\$23.86
21	01625011	\$23.86		\$23.86	83	01626323	\$23.86		\$23.86
22	01625016	\$23.86		\$23.86	84	01626324	\$23.86		\$23.86
23	01625017	\$23.86		\$23.86	85	01626325	\$23.86		\$23.86
24	01625018	\$23.86		\$23.86	86	01626401	\$23.86		\$23.86
25	01625020	\$23.86		\$23.86	87	01626402	\$23.86		\$23.86
26	01625022	\$23.86		\$23.86	88	01626403	\$23.86		\$23.86
27	01625023	\$23.86		\$23.86	89	01626404	\$23.86		\$23.86
28	01625024	\$23.86		\$23.86	90	01626405	\$23.86		\$23.86
29	01625025	\$23.86		\$23.86	91	01626406	\$23.86		\$23.86
30	01625026	\$23.86		\$23.86	92	01626409	\$23.86		\$23.86
31	01625027	\$23.86		\$23.86	93	01626501	\$23.86		\$23.86
32	01625028	\$23.86		\$23.86	94	01626502	\$23.86		\$23.86
33	01625029	\$23.86		\$23.86	95	01626504	\$23.86		\$23.86
34	01625030	\$23.86		\$23.86	96	01626505	\$23.86		\$23.86
35	01625032	\$23.86		\$23.86	97	01626506	\$23.86		\$23.86
36	01625037	\$23.86		\$23.86	98	01626507	\$23.86		\$23.86
37	01625038	\$23.86		\$23.86	99	01626508	\$23.86		\$23.86
38	01625043	\$23.86		\$23.86	100	01626511	\$23.86		\$23.86
39	01625044	\$23.86		\$23.86	101	01626512	\$23.86		\$23.86
40	01625048	\$23.86		\$23.86	102	01626514	\$23.86		\$23.86
41	01626103	\$23.86		\$23.86	103	01626515	\$23.86		\$23.86
42	01626104	\$23.86		\$23.86	104	01627002	\$23.86		\$23.86
43	01626105	\$23.86		\$23.86	105	01627003	\$23.86		\$23.86
44	01626106	\$23.86		\$23.86	106	01627006	\$23.86		\$23.86
45	01626107	\$23.86		\$23.86	107	01627007	\$23.86		\$23.86
46	01626108	\$23.86		\$23.86	108	01627008	\$23.86		\$23.86
47	01626109	\$23.86		\$23.86	109	01627009	\$23.86		\$23.86
48	01626111	\$23.86		\$23.86	110	01627010	\$23.86		\$23.86
49	01626112	\$23.86		\$23.86	111	01627011	\$23.86		\$23.86
50	01626113	\$23.86		\$23.86	112	01627012	\$23.86		\$23.86
51	01626114	\$23.86		\$23.86	113	01627013	\$23.86		\$23.86
52	01626115	\$23.86		\$23.86	114	01627014	\$23.86		\$23.86
53	01626116	\$23.86		\$23.86	115	01627015	\$23.86		\$23.86
54	01626117	\$23.86		\$23.86	116	01627017	\$23.86		\$23.86
55	01626201	\$23.86		\$23.86	117	01627018	\$23.86		\$23.86
56	01626202	\$23.86		\$23.86	118	01627019	\$23.86		\$23.86
57	01626203	\$23.86		\$23.86	119	01627020	\$23.86		\$23.86
58	01626204	\$23.86		\$23.86	120	01627021	\$23.86		\$23.86
59	01626207	\$23.86		\$23.86	121	01628101	\$23.86		\$23.86
60	01626208	\$23.86		\$23.86	122	01628102	\$23.86		\$23.86
61	01626209	\$23.86		\$23.86	123	01628103	\$23.86		\$23.86
62	01626210	\$23.86		\$23.86	124	01628104	\$23.86		\$23.86

EXHIBIT B

ASSESS- MENT NUMBER	APN	LIGHTING	LANDSCAPE	TOTAL	ASSESS- MENT NUMBER	APN	LIGHTING	LANDSCAPE	TOTAL
125	01628105	\$23.86		\$23.86	187	01629411	\$23.86		\$23.86
126	01628106	\$23.86		\$23.86	188	01629412	\$23.86		\$23.86
127	01628107	\$23.86		\$23.86	189	01629413	\$23.86		\$23.86
128	01628108	\$23.86		\$23.86	190	01629414	\$23.86		\$23.86
129	01628109	\$23.86		\$23.86	191	01629415	\$23.86		\$23.86
130	01628110	\$23.86		\$23.86	192	01629416	\$23.86		\$23.86
131	01628112	\$23.86		\$23.86	193	01629417	\$23.86		\$23.86
132	01628113	\$23.86		\$23.86	194	01629501	\$23.86		\$23.86
133	01628116	\$23.86		\$23.86	195	01629502	\$23.86		\$23.86
134	01628117	\$23.86		\$23.86	196	01629505	\$23.86		\$23.86
135	01628202	\$23.86		\$23.86	197	01629511	\$23.86		\$23.86
136	01628203	\$23.86		\$23.86	198	01629513	\$23.86		\$23.86
137	01628204	\$23.86		\$23.86	199	01629515	\$23.86		\$23.86
138	01628205	\$23.86		\$23.86	200	01629516	\$23.86		\$23.86
139	01628206	\$23.86		\$23.86	201	01629519	\$23.86		\$23.86
140	01628207	\$23.86		\$23.86	202	01629520	\$23.86		\$23.86
141	01628210	\$23.86		\$23.86	203	01629521	\$23.86		\$23.86
142	01628211	\$23.86		\$23.86	204	01629524	\$23.86		\$23.86
143	01628212	\$23.86		\$23.86	205	01629525	\$23.86		\$23.86
144	01628213	\$23.86		\$23.86	206	01629528	\$23.86		\$23.86
145	01628214	\$23.86		\$23.86	207	01629601	\$23.86		\$23.86
146	01628215	\$23.86		\$23.86	208	01629602	\$23.86		\$23.86
147	01628216	\$23.86		\$23.86	209	01629603	\$23.86		\$23.86
148	01628219	\$23.86		\$23.86	210	01629604	\$23.86		\$23.86
149	01628220	\$23.86		\$23.86	211	01629608	\$23.86		\$23.86
150	01628223	\$23.86		\$23.86	212	01629613	\$23.86		\$23.86
151	01629101	\$23.86		\$23.86	213	01629614	\$23.86		\$23.86
152	01629102	\$23.86		\$23.86	214	01629616	\$23.86		\$23.86
153	01629105	\$23.86		\$23.86	215	01629617	\$23.86		\$23.86
154	01629106	\$23.86		\$23.86	216	01629618	\$23.86		\$23.86
155	01629109	\$23.86		\$23.86	217	01629619	\$23.86		\$23.86
156	01629110	\$23.86		\$23.86	218	01629620	\$23.86		\$23.86
157	01629111	\$23.86		\$23.86	219	01629622	\$23.86		\$23.86
158	01629114	\$23.86		\$23.86	220	01629623	\$23.86		\$23.86
159	01629115	\$23.86		\$23.86	221	01629625	\$23.86		\$23.86
160	01629118	\$23.86		\$23.86	222	01629627	\$23.86		\$23.86
161	01629119	\$23.86		\$23.86	223	01630002	\$23.86		\$23.86
162	01629120	\$23.86		\$23.86	224	01630008	\$23.86		\$23.86
163	01629204	\$23.86		\$23.86	225	01630009	\$23.86		\$23.86
164	01629205	\$23.86		\$23.86	226	01630010	\$23.86		\$23.86
165	01629206	\$23.86		\$23.86	227	01630011	\$23.86		\$23.86
166	01629207	\$23.86		\$23.86	228	01630012	\$23.86		\$23.86
167	01629208	\$23.86		\$23.86	229	01630013	\$23.86		\$23.86
168	01629209	\$23.86		\$23.86	230	01630014	\$23.86		\$23.86
169	01629210	\$23.86		\$23.86	231	01630015	\$23.86		\$23.86
170	01629211	\$23.86		\$23.86	232	01630016S	\$23.86		\$23.86
171	01629215	\$23.86		\$23.86	233	01630017S	\$23.86		\$23.86
172	01629216	\$23.86		\$23.86	234	01630018S	\$23.86		\$23.86
173	01629217	\$23.86		\$23.86	235	01630021S	\$23.86		\$23.86
174	01629219	\$23.86		\$23.86	236	01630023S	\$23.86		\$23.86
175	01629220	\$23.86		\$23.86	237	01630025	\$23.86		\$23.86
176	01629221	\$23.86		\$23.86	238	01630027S	\$23.86		\$23.86
177	01629222	\$23.86		\$23.86	239	01631021	\$23.86		\$23.86
178	01629223	\$23.86		\$23.86	240	01631031	\$23.86		\$23.86
179	01629401	\$23.86		\$23.86	241	01631040	\$23.86		\$23.86
180	01629402	\$23.86		\$23.86	242	01645067	\$23.86		\$23.86
181	01629403	\$23.86		\$23.86	243	01647002	\$23.86		\$23.86
182	01629406	\$23.86		\$23.86	244	01647003	\$23.86		\$23.86
183	01629407	\$23.86		\$23.86	245	01647004	\$23.86		\$23.86
184	01629408	\$23.86		\$23.86	246	01647005	\$23.86		\$23.86
185	01629409	\$23.86		\$23.86	247	01647006	\$23.86		\$23.86
186	01629410	\$23.86		\$23.86	248	01647012	\$23.86		\$23.86

EXHIBIT B

ASSESS- MENT NUMBER	APN	LIGHTING	LANDSCAPE	TOTAL
249	01647013	\$23.86	\$15.00	\$38.86
250	01647014	\$23.86	\$15.00	\$38.86
251	01647015	\$23.86	\$15.00	\$38.86
252	01647016	\$23.86	\$15.00	\$38.86
253	01647017	\$23.86	\$15.00	\$38.86
254	01647018	\$23.86	\$15.00	\$38.86
255	01647019	\$23.86	\$15.00	\$38.86
256	01647020	\$23.86	\$15.00	\$38.86
257	01647021	\$23.86	\$15.00	\$38.86
258	01647022	\$23.86	\$15.00	\$38.86
259	01647023	\$23.86	\$15.00	\$38.86
260	01647024	\$23.86	\$15.00	\$38.86
261	01647025	\$23.86	\$15.00	\$38.86
262	01647026	\$23.86	\$15.00	\$38.86
263	01647027	\$0.00	\$0.00	\$0.00
264	01647028	\$23.86	\$15.00	\$38.86
265	01647029	\$23.86	\$15.00	\$38.86
266	01647030	\$23.86	\$15.00	\$38.86
267	01647031	\$23.86	\$15.00	\$38.86
268	01647032	\$23.86	\$15.00	\$38.86
269	01647033	\$23.86	\$15.00	\$38.86
270	01647034	\$23.86	\$15.00	\$38.86
271	01647035	\$23.86	\$15.00	\$38.86
272	01647036	\$23.86	\$15.00	\$38.86
273	01647037	\$23.86	\$15.00	\$38.86
274	01647038	\$23.86	\$15.00	\$38.86
275	01647039	\$23.86	\$15.00	\$38.86
276	01647040	\$23.86	\$15.00	\$38.86
277	01647041	\$23.86	\$15.00	\$38.86
278	01647042	\$23.86	\$15.00	\$38.86
279	01647043	\$23.86	\$15.00	\$38.86
280	01647044	\$23.86	\$15.00	\$38.86
281	01647045	\$23.86	\$15.00	\$38.86
282	01647046	\$23.86	\$15.00	\$38.86
283	01647047	\$23.86		\$23.86
284	01647049	\$23.86		\$23.86
285	01647050	\$23.86		\$23.86
286	01648030	\$23.86		\$23.86