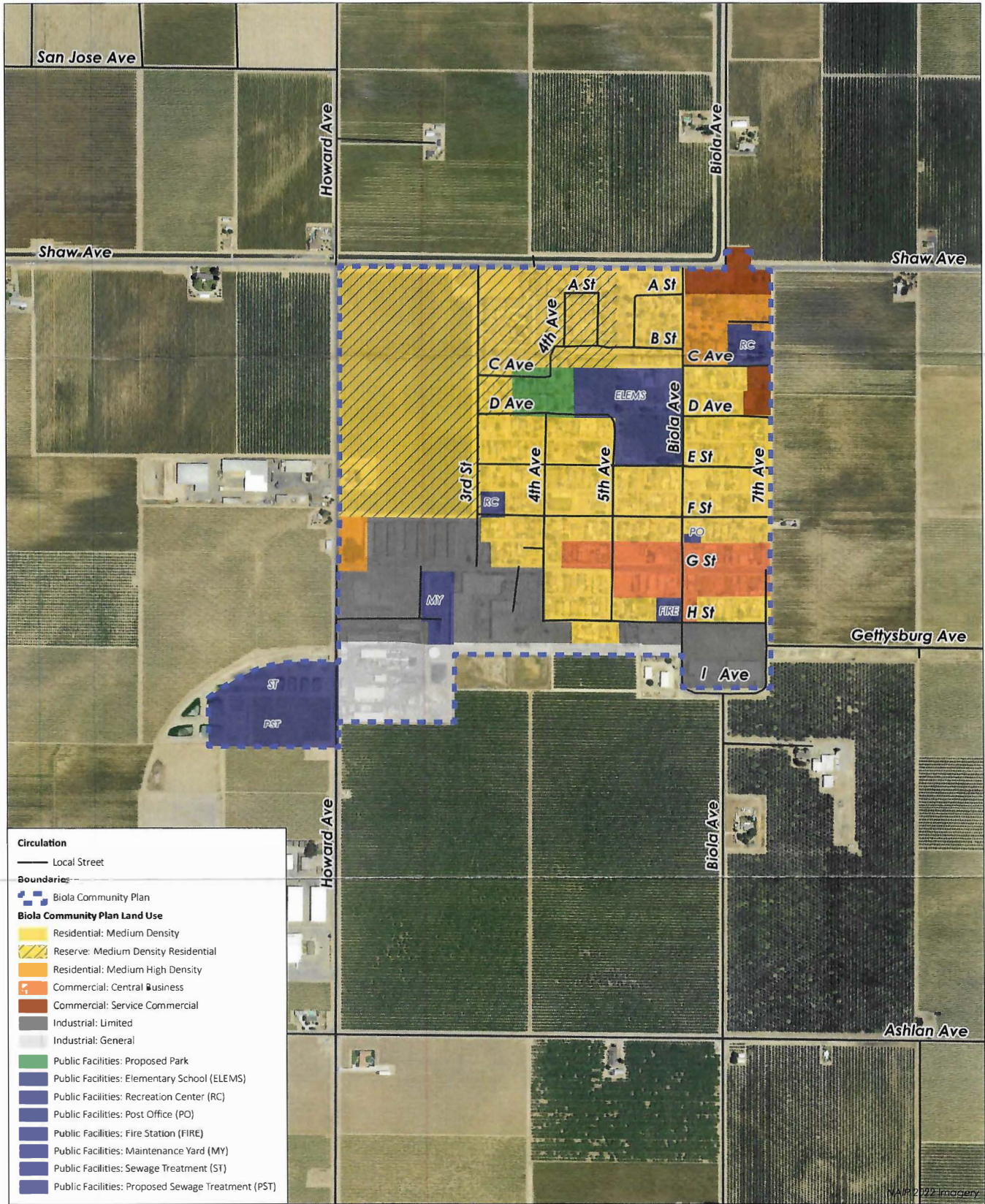


February 15, 2024  
 Agenda No. 6



**Circulation**  
 — Local Street

**Boundaries**  
 ■ Biola Community Plan

**Biola Community Plan Land Use**

- Residential: Medium Density
- Reserve: Medium Density Residential
- Residential: Medium High Density
- Commercial: Central Business
- Commercial: Service Commercial
- Industrial: Limited
- Industrial: General
- Public Facilities: Proposed Park
- Public Facilities: Elementary School (ELEMS)
- Public Facilities: Recreation Center (RC)
- Public Facilities: Post Office (PO)
- Public Facilities: Fire Station (FIRE)
- Public Facilities: Maintenance Yard (MY)
- Public Facilities: Sewage Treatment (ST)
- Public Facilities: Proposed Sewage Treatment (PST)



Adopted Biola Community Plan Land Uses

PROVOST & PRITCHARD